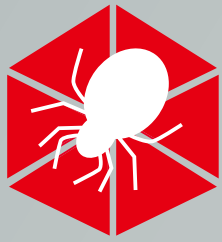




DataSpider[®] Servista

Transforming Data Integration from "Create" to "Connect"

Data integration software that easily and conveniently connects every data from the cloud to legacy systems.



Transforming Data Integration from
"Create" to "Connect"

DataSpider[®] Servista

"Servista" has been coined by combining the two words of service and fantasista. It means, "the provider of data integration service infrastructure."

DataSpider Servista serves as an information integration hub that efficiently connects all types of data ranging from the cloud to legacy systems.

For business enterprises, a diverse range of system integration is indispensable to execute their operations. At the same time, a flexible response will be required for rapid evolution of new technologies such as the cloud, big data and mobile systems. To connect and operate these systems individually would not only cost time and expenditure, but would increase the complexity of system configuration as well. By transforming the "creation" of multifarious inter-system integration into "connection", DataSpider Servista will achieve the development and operation of data integration processes efficiently.



Features of DataSpider Servista

Development and operation costs can be substantially reduced through an easy setup that requires no programming

Program coding is unnecessary for the development and operations of DataSpider. Integration processing can be rapidly created through the use of user-friendly GUI tools. It is equipped with a variety of enriching tools required for data integration such as script development, debugger, logging, specifications, and trigger. Therefore, one does not have to be a skilled programmer to be able to easily and efficiently develop and operate high-quality integration processing.

Mutual integration of different types of data will be achieved through diverse adapters

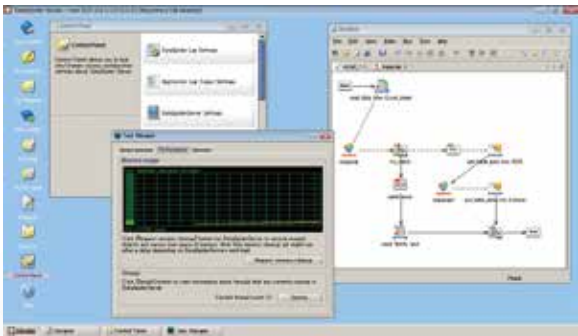
Various types of adapters--databases, files, applications, the cloud, and protocols--can be flexibly combined and integrated. Furthermore, DataSpider has a full lineup of features ranging from the association of input/output data for conversion, calculations, character string processing, code conversions, and merging function. It can achieve everything from simple data interfacing to flexible data and conversion processing on the same level as a programming language.

Attains high-quality, high-speed performance

DataSpider can realize high performance on par with program coding since its processing is executed after being converted to a Java program. It can also rapidly integrate big data as a result of its unique mechanism of partitioning data concurrently with parallel execution.

Studio

Studio is the integrated development environment of DataSpider Servista. By using intuitive GUI tools, Studio can be used to centrally operate the creation of integration scripts, operation setup, and server control.



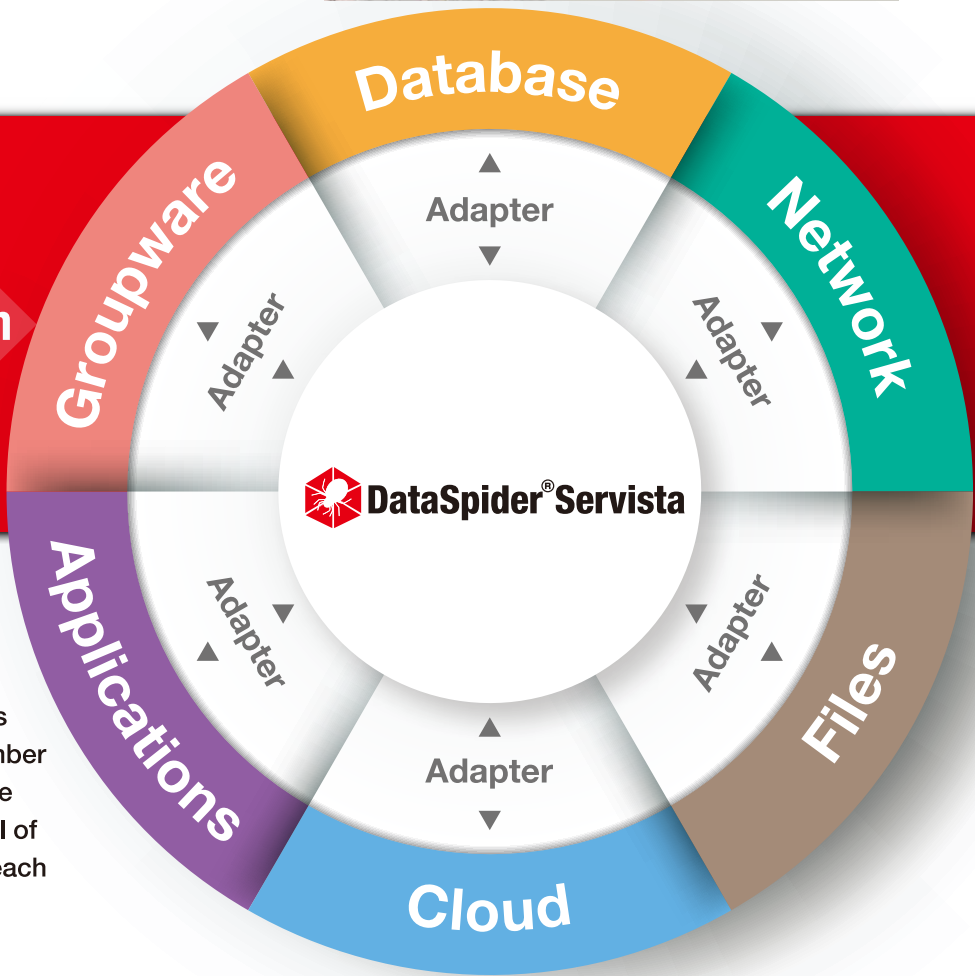
Configuration Connection

Development

Operation Control

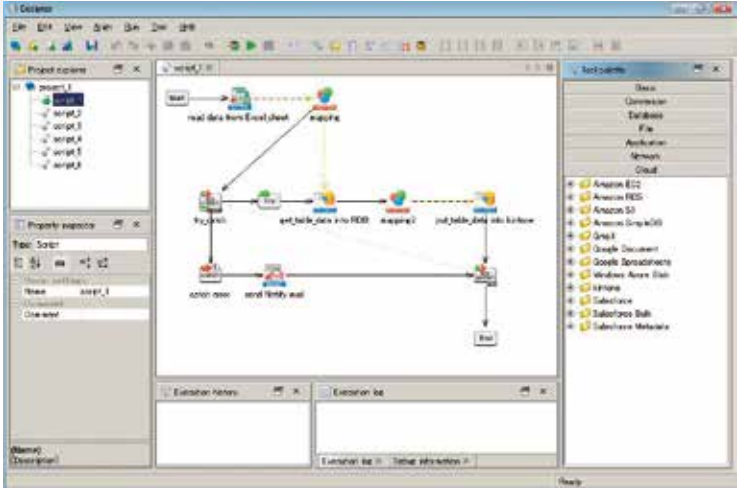
Adapters

Adapters act as a function to access various data sources. An adapter can provide a number of input/output parts such as “read and write data,” “send and receive files,” and “API call of applications.” Complex API acquisition for each data source or even programming is unnecessary, allowing for easy integration.



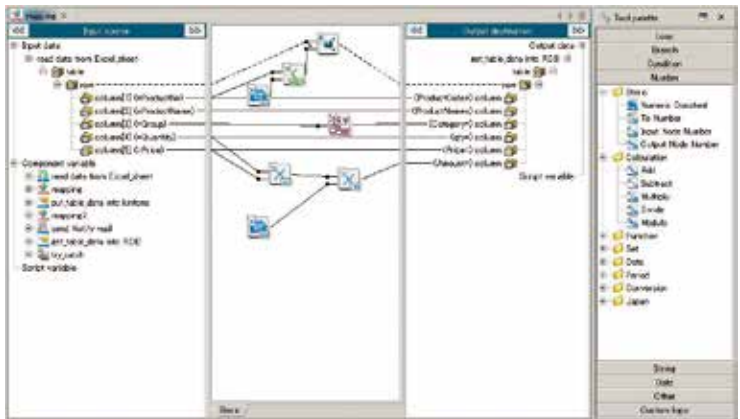
Database	Network	Files	Cloud
JDBC ODBC Microsoft Access DB2 Oracle MySQL PostgreSQL Microsoft SQL Server NeoCore DB2 for i MongoDB	FTP JMS REST Web Web Service Mail	CSV Microsoft Excel HTML XML Fixed length Variable length File Operation File System Apache Hadoop HULFT	Amazon Web Service Microsoft Azure Cloudn G Suite kintone
Application	Groupware	SDK	
Dr.Sum EA Microsoft Dynamics CRM Microsoft Dynamics AX Tableau StraForm-X Connector	SAP SAP BC SAP Table Query Sedue SVF	IBM Domino IBM Notes	Java based SDK
SDK is provided for further expansion of functionality (SDK : Software Development Kit) Original adapters and converters can be created by utilizing the Java-based adapter development kit SDK.			

Designer



Designer is a tool to create a data integration script. Numerous functions are available such as data input/output, branching, looping, and setup of variables and conversion. Drag and drop icons to a canvas can create the flow of processing just like a flowchart.

Mapper



Mapper is a function that converts input/output data. It not only associates input items with output items, but also achieves flexible conversions by being able to combine over 140 functions such as calculations, string processing, condition judgment and date processing.

Operation Control with DataSpider

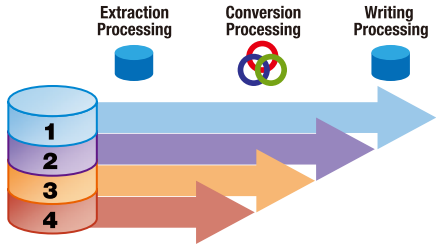
Trigger

Trigger is a function that automatically starts up and operates the script that has been created through DataSpider. Triggers can be utilized for various requirements such as remote function call, file status change detection, and HTTP (REST) startup.



Parallel Stream Processing (PSP)

PSP is a mechanism that processes large-volume data in high speed by controlling memory consumption. It attains high-speed processing of big data by partitioning read processing, conversion processing, and write processing into block units while conducting parallel execution.



High-speed execution through compilation

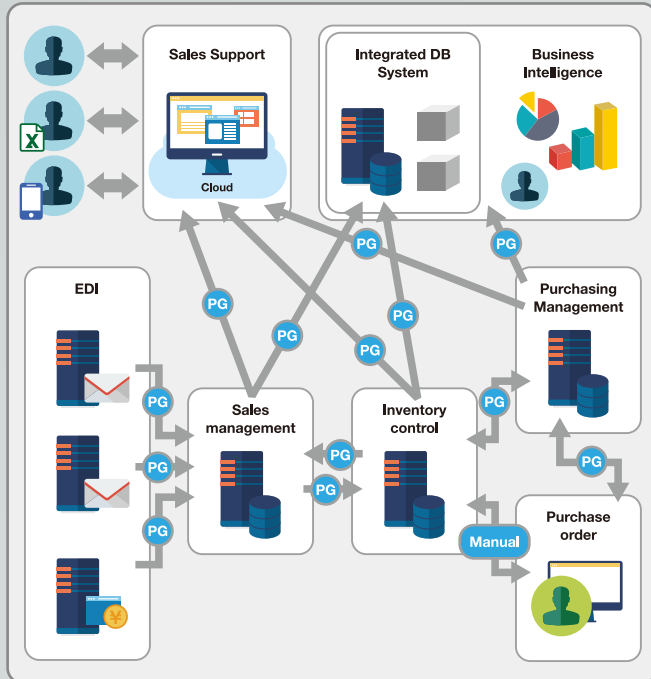
The DataSpider script that has been created through a GUI tool will be compiled to an executable format after automatic conversion into a Java program. For that reason, DataSpider will realize high-speed performance that is equivalent to the performance when developed from scratch in Java.

Use Case 1

Utilization as a data integration hub

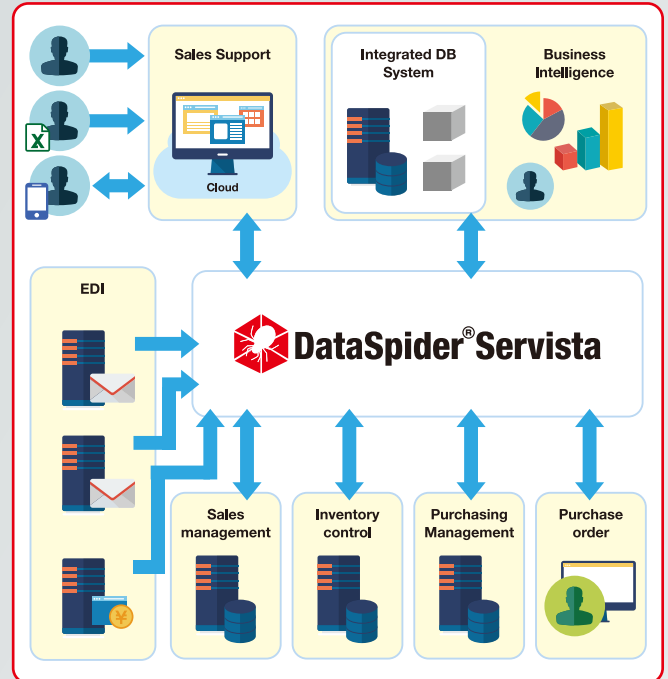
Prior to installing DataSpider

Numbers of program development and manual data input are required for each types of integrating systems, which impose extra labor hours and costs on companies.



After installing DataSpider

By using DataSpider as a data integration hub, integration has become easy, leading to the reduction in development man-hours and operation costs, allowing for a flexible response to any change.



Use Case 2

Automated Operation

Manual operations such as inputting data from Excel that was attached to an e-mail can be automated. Another instance of automation is tabulating the day's sales data and sending it to a mobile device at a fixed time.



Use Case 3

Data loading, Data migration

DataSpider can be utilized as an ETL tool for building data marts and data warehouses for BI systems, data syncing during parallel operations, and data migration during system renewals.



Use Case 4

Cloud Integration

DataSpider can achieve the hybrid integration of the cloud and on-premise systems. It provides a range of adapter groups--AWS, Google, Windows Azure, kintone, Salesforce, REST, SOAP--that can quickly connect to cloud services.



Package Lineup

DataSpider offers two types of base packages. One is the "Advanced" package that contains a rich lineup of adapters, and the other is "Basic" package that includes general adapters. Depending on the usage, you can select from the combination of a base package and optional adapters.

DataSpider® Servista Advanced Server Package

Basic configuration of package:	Standard trigger functions	Standard adaptor		Optional adaptor		
1 server license 5 development-use client licenses	Application Schedule File HTTP DB FTP Web Service HULFT Script	Microsoft Access MySQL PostgreSQL DB2 Oracle Microsoft SQL Server JDBC ODBC CSV Microsoft Excel HULFT	HTML XML Fixed length Variable length File Operation File System FTP Web Web Service Mail REST*	Amazon Web Services Apache™ Hadoop* Cloudn DB2 for i Dr.Sum EA G Suite IBM Domino IBM Notes JMS kitone	Microsoft Azure Microsoft Dynamics AX* Microsoft Dynamics CRM* MongoDB NeoCore	Tableau SAP SAP BC SAP Tabel Query Sedue* SVF *

* Please inquire

DataSpider® Servista Basic Server Package

Basic configuration of package:	Standard trigger functions	Standard adaptor		Optional adaptor			
1 server license 5 development-use client licenses	Application Schedule File HTTP DB FTP Web Service HULFT Script	CSV Microsoft Excel JDBC ODBC Mail HTML XML File Operation HULFT	Select one of the following: Microsoft Access DB2 Oracle MySQL PostgreSQL Microsoft SQL Server NeoCore	Amazon Web Services Apache™ Hadoop* Cloudn DB2 DB2 for i Dr.Sum EA File System Fixed length FTP G Suite	IBM Domino IBM Notes JMS kitone Microsoft Access Microsoft Azure Microsoft Dynamics AX* Microsoft Dynamics CRM* Microsoft SQL Server	MongoDB MySQL NeoCore Oracle PostgreSQL REST* SAP SAP BC SAP Tabel Query	Sedue* SVF * Tableau Variable length Web Web Service

* Please inquire

Operating environment

- Windows Server 2008 / 2008 R2 / 2012 / 2012 R2 / 2016
- Please inquire for Red Hat Enterprise Linux
- Please inquire for Cent OS
- Please inquire for AIX
- Please inquire for HP-UX
- Please inquire for Solaris

Various services

We provide various technological services.

- Regular training
- Onsite training
- Initial introduction support service
- Professional service

Each vendor will independently make specification changes with regard to operating systems and the operating environment. For inquiries regarding the support status of the latest version, please see below.

For details, go to the Web

<https://www.hulft.com/apac/dataspider-servista/>

DataSpider, DataSpider Servista related products are trademarks of Saison Information Systems Co., Ltd.
Other names of companies, products, and services are trademarks of their respective companies.
The published content of this catalogue is valid as of June 2019.

June 2019 Edition

HULFT

Headquarters

Saison Information Systems Co., Ltd.
Akasaka Intercity AIR 19th Floor
1-8-1 Akasaka, Minato-ku, Tokyo 107-0052, Japan
Tel: +81-3-6370-2300
hulft.com info@hulft.com

USA

HULFT, Inc.
1820 Gateway Dr. Suite 120
San Mateo, CA 94404, USA
Tel: +1-650-393-4930

Singapore

HULFT Pte. Ltd.
7 Temasek Boulevard #32-51, Suntec Tower 1
Singapore 038987
Tel: +65 6678 6566

China

HULFT China Co., Ltd.
3B/D, No.1068 Tianshan West Rd.
Shanghai 200335, P.R. China
Tel: +86-21-6239-9201

RM 1302, Air China Plaza, 36 XiaoYun Rd.
Chaoyang District, Beijing 100125, P.R. China
Tel: +86-10-8447-5989

Saison Information Systems CO., LTD. EMEA Office

6th Floor, First Central 200, 2 Lakeside Drive, London, NW10 7FQ, United Kingdom